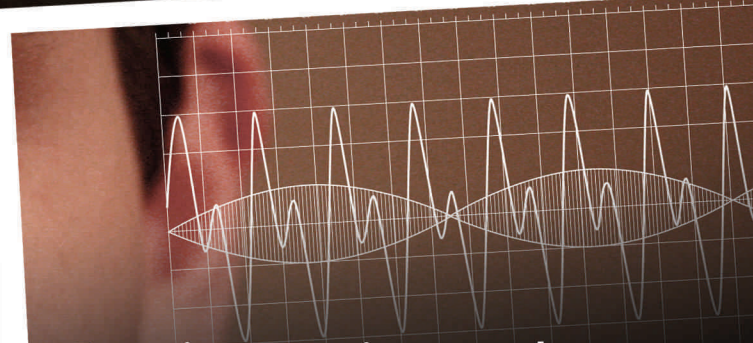




# ECOUSTIC™ BOARD GRADER

An innovative and efficient way  
to grade structural wood



Featuring our unique tuned  
hammer and vibration  
isolation system, TIMBRE™  
for maximum accuracy  
and consistency

# ECOUSTIC™ BOARD GRADER

**Grades boards for density and stiffness (MoE) and is capable of assessing random dimension, random length timber in the green or dry condition.**



## Optimise grade yield

**Incorporate Optiwise™, our real time grade threshold optimisation software**

- ▶ Set tight thresholds
- ▶ Maintain consistent results to set values
- ▶ Maximise grade yield while maintaining compliance

Every board's dimension, weight and acoustic wave velocity are measured and used to calculate density and stiffness.

Calibre's unrivalled Timbre™ Striking System sets the Ecooustic™ grader apart by providing maximum acoustic signal quality and consistency.

## Improving your bottom line

- ▶ Ability to maximise production efficiency by grading boards at the start of production
- ▶ Can sort boards for density which enables efficient kiln drying
- ▶ Minimal operator control or training
- ▶ Increased grading speeds
- ▶ Installed into a standard lugged processing chain requiring no additional floor space
- ▶ Low operating and maintenance costs
- ▶ Provides excellent traceability for audit and production tallying
- ▶ Data can be utilised to analyse production and log resource

## An innovative, accurate and robust machine

- ▶ Innovative, accurate and robust design of hardware and mechanical parts
- ▶ Industrial computer, LCD monitor and control system all housed in a stand alone dust proof IP55 cabinet
- ▶ Spray marking system (grade colour marked on end of board)
- ▶ Internet based remote access
- ▶ Serial or Ethernet output communication to existing PLC and/or tallying system
- ▶ Data output to Calibre's TimberGrade™ data management software